

SCREENING

– a rail track revolution

Raildoc is proud to offer a revolutionary technique for assessing the condition of wooden sleepers. The future of sleepers has never looked so good.

Raildoc now offers a completely new approach for assessing the condition of sleepers: Screening. With advanced technology attached to a vehicle running on the rail track, we can deliver precise measurements that are not affected by wind, weather or geography.

The measuring rig can be mounted on nearly any type of vehicle running on the track. All that's needed to connect the rig is a power chord. The operator inside the vehicle is running a pc connected to the rig via a usb-cable.

The results are presented in Screen Tool, an online database showing the condition of each individual sleeper which makes it possible, as never before, to precisely identify defective sleepers and/or problem stretches.

For the customer, Screening has many advantages.

What does the test show?

- Base plate depression, at three levels.
- Possible misalignment.
- C/C-distance.
- Position of each sleeper by kilometer, meter and decimeter.
- GPS-coordinates.

It is fast and effective, and it saves both time and money.

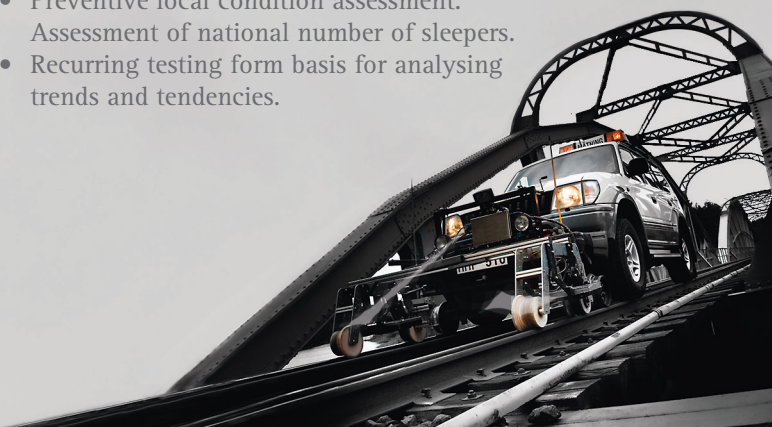
The results of the Screening are precise no matter where in the world the measuring has been carried out. This ensures the replacement of the right sleepers at the right time, so that only those that really need replacing are replaced. All in all, this provides a better basis for budgeting, planning and implementation of track maintenance.

We would also like to point out the, perhaps obvious, fact that Raildoc is completely objective and has no interest in influencing the results in any direction.

The assessment is carried out when the track is free from traffic and does not affect regular rail services. Darkness is not an obstacle.

When to use Screening?

- When changing maintenance contractor.
- Before and after replacement of sleepers. Which to replace? What was the result?
- Preventive local condition assessment. Assessment of national number of sleepers.
- Recurring testing form basis for analysing trends and tendencies.





Screen Tool

Screen Tool - analyze the state of the track

All measurement data are analyzed and saved in ScreenTool, a web-based database. Every user receives a personal username and password for easy access to all of the measurement data.

It is possible to obtain overall data for longer stretches of the track, or more specific data for shorter stretches. You can also choose to display only those sleepers in a given condition.

Naturally, Screen Tool comes with the purchase of Screening.

www.screentool.se

Diagram 1: Statistics

Km	Antal	Klass 3 Grön	Klass 2 Gul	Klass 1 Röd	Medelhavstånd CC	Avstånd CC > 900 r	Snedställning > 100	
60	1 269	581	280	408	720	10	4	
61	1 254	514	274	466	710	12	2	
62	1 374	578	249	547	690	28	13	
63	1 397	619	245	513	690	19	1	
C	1 211	410	387	521	720	5	4	
82	709	261	272	462	710		5	
Totalt	61	80 343	34 160	20 202	25 981	710	1008	282

Diagram 2: Per 20 kilometer

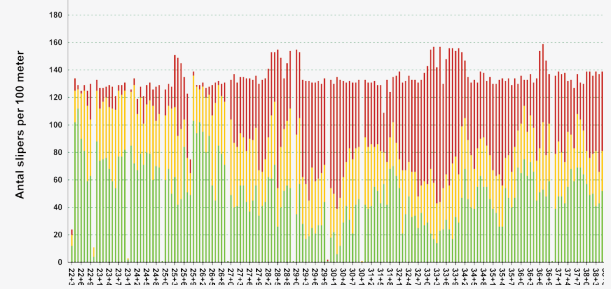


Diagram 3: Per kilometer



Diagram 4: Per individual sleeper

KM+M	Avst	Sned	Ned	K	KM+M	Avst	Sned	Ned	K	KM+M	Avst	Sned	Ned	K
22+382,0	0	0	0	●	22+419,3	700	-20	-8	●	22+456,9	720	-50	-9	●
22+382,3	340	0	-3	●	22+420,1	770	-20	-2	●	22+457,7	750	-30	-11	●
22+383,1	740	-40	-14	●	22+420,8	750	-40	-7	●	22+458,5	790	-20	-12	●
22+383,8	730	-30	-10	●	22+421,5	690	10	-1	●	22+459,2	700	10	-10	●
22+384,7	840	-130	-13	●	22+422,3	760	-70	-7	●	22+460,0	780	-10	-6	●
22+385,3	680	-40	-9	●	22+423,0	730	-30	-10	●	22+460,7	730	-20	-7	●
22+386,1	770	-10	0	●	22+423,8	740	-30	-1	●	22+461,5	760	-40	-5	●
22+386,8	730	-30	-12	●	22+424,5	780	-30	-5	●	22+462,2	770	-10	-5	●
22+387,5	690	-30	-2	●	22+425,3	730	-40	-8	●	22+463,0	750	20	-1	●
22+388,1	560	-10	-7	●	22+426,1	770	-30	-6	●	22+463,8	820	-30	-3	●
22+388,7	560	0	-8	●	22+426,8	760	-40	-3	●	22+464,6	750	0	-1	●
22+389,2	520	-10	-9	●	22+427,5	720	-30	-13	●	22+465,4	800	-10	-14	●
22+389,8	620	-10	-6	●	22+428,1	590	-20	-12	●	22+466,2	770	-20	-3	●
22+390,6	790	-20	-6	●	22+428,7	590	-30	-2	●	22+466,9	760	-50	-7	●
22+393,0	0	0	-2	●	22+431,0	0	-20	-6	●	22+467,7	800	-10	-13	●
22+393,7	720	-10	-3	●	22+431,7	630	-10	-6	●	22+468,3	570	-10	-1	●

The right effort...

- at the right stretch!
- at the right time!
- with the right means!

Precise
Fast
Independent
Reliable

RAILDOC AB

Address Rågåker 47, S-781 93 Borlänge, Sweden

Phone +46 243 148 00

Fax +46 243 826 11

E-mail info@raildoc.se

Web www.raildoc.se